

Award for GovHub builder

BY CALEB CLUFF

THE joint venture partners in the construction of Ballarat's GovHub have been named South West Commercial Regional Builder of the Year for their work on the landmark building.

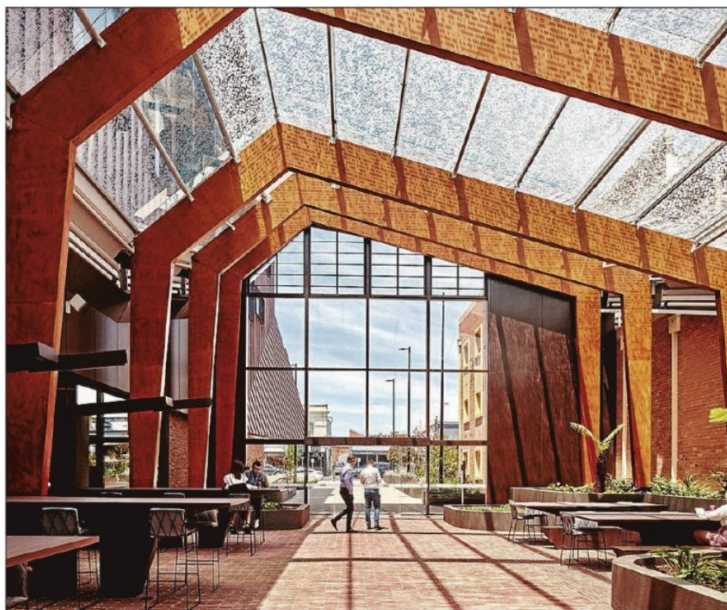
Kane Constructions and joint venture partner Nicholson Construction received the award at the 2022 South West Master Builders Victoria Regional Building Awards this week.

Nicholson Construction director Richard Nicholson says the award is an important recognition of the team and teamwork behind the construction.

"The project team really went above board to deliver what was a complex building, and one which was really state of the art," Mr Nicholson said.

"It's the largest mass timber structure in regional Australia; it hadn't been done before, out in the regions. We're very proud our team could be involved with Kane and deliver something as impressive as it is."

The story behind the joint



MASS TIMBER: Builder Richard Nicholson is proud of the extensive use of timber in GovHub, which has carbon offsets factored into its fabrication. **Picture: Supplied.**

venture goes back long before GovHub was a drawing or even thought on the architect's page. Mr Nicholson's father had worked with the principals of Kane Construction in the 1970s and

80s, and had shared duties, including presidency of the Master Builders Association of Victoria.

"They had an enduring professional relationship for many, many years. I met

one of the former directors of Kanes in one of my early lives, before I got back to working in construction in Ballarat. That was working on the Grand Prix at Albert Park, because they built the

pit building down there, and I supervised the construction. So I met them there, and we've had a multi-generational relationship with them. But (Gov Hub) was the first JV (joint venture) we'd done together."

That relationship has led to other projects says Mr Nicholson, with the joint venture team working on the \$55 million Bendigo Kangan Institute of TAFE construction and the \$105 million Bendigo Law Courts, due to be completed in March 2023.

The law courts also see the JV again working with John Wardle architects, this time using standing seam copper as a striking finish rather than the zinc used on GovHub; both projects used Stawell-made Krause bricks.

All three projects are initiative of the state government, which Mr Nicholson says has been an important factor in keeping regional building alive during the pandemic.

"There's a strong investment from the state, and we've been able to capture some of those opportunities," Mr Nicholson says.

"We're very pleased and

proud to be able to do it. We're excited about the about the Commonwealth Games announcement; that's going to come around awfully quickly. So there's lots of work out there at the moment, we are flat out. We're almost at capacity, actually."

"Gov Hub was our first mass timber structure; we're currently building another mass timber structure down in Warrnambool, a \$20 million project for Lyndoch HealthCare. It's something we're doing on our own and could only have tackled on our own post GovHub with the knowledge we learnt there. It's great timber is coming in as an alternative."

"We're just so proud of the economic achievements we've got utilising regional partnerships: 75 per cent of our suppliers came from regional Victoria; 70 per cent of the workforce lived within 100km of the project; a quarter lived within 10km. We were able to bring local partnership and connection with so many regional trades, amplify outcomes and produce these great results."

Indigenous art to feature in school build

BY MICHELLE SMITH

FUTURE generations of students at Woody Yaloak Primary School's four campuses will learn in the shadow of the Indigenous art created by the pupils who are current members of the school's Koorie Club.

The school recently received \$9.14 million for capital works across the four campuses at Ross Creek, Smythesdale, Scarsdale and Snake Valley and art from the school's Aboriginal and Torres Strait Islander pupils will feature on glass doors

and windows in the redevelopment.

On Wednesday, Koorie Club members met at the Smythesdale campus for a day of activities which included designing the artwork for the building project and a cooking class in which they made chicken and roast vegetables infused with native herbs.

Woody Yaloak Primary 'Koorie Champion' Megan Webb said 19 children from foundation to grade six helped design the artworks with the help of Indigenous staff, an artist and a representative from BADAC.

"They worked on creating four different artworks but we wanted them to have a common theme where we have four campuses but are one school," Ms Webb said. "The general design for all four artworks was to have four different parts in the picture but join together in the middle."

Before getting creative they talked about symbols and story-telling using Indigenous symbols.

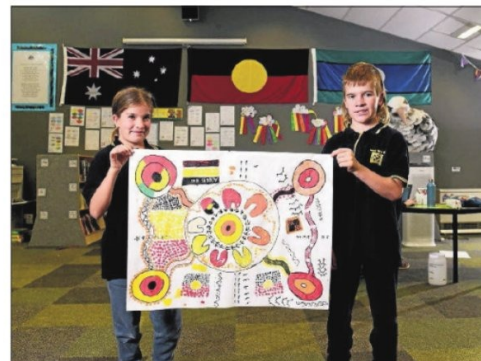
Images of the completed artworks will be sent to the architect designing the

school redevelopment projects to be put on to glass.

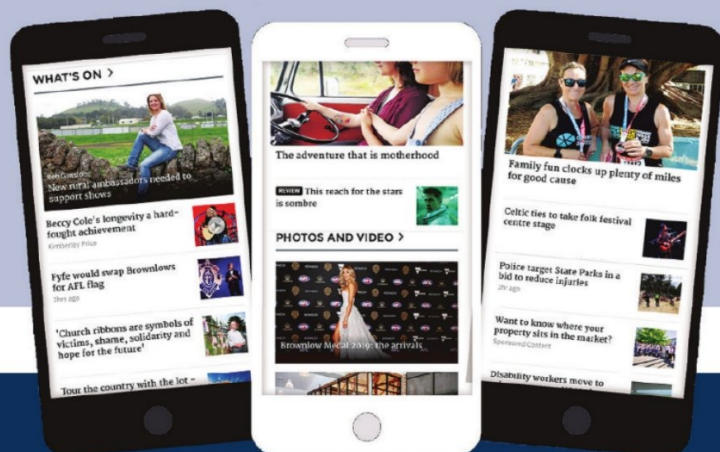
Ms Webb said the artworks would open up conversations about Indigenous culture now and in the future.

"Whether we are Indigenous or not, it's an important part of our history and we are teaching that to all our kids," she said.

"I think our society is becoming more open to conversations about Indigenous history and hopefully (these artworks) will bring about conversations about how it was created and open up wider discussions."



ART: Woody Yaloak Primary School Koorie Club members Indy and Jordan with some of the artwork to be featured in the school's redevelopment. **Picture: Adam Trafford**



GET NEWSLETTERS AND NEWS ALERTS

- ✓ Sent direct to your inbox
- ✓ Browse the latest headlines
- ✓ Breaking news as it happens
- ✓ Select your favourite topics

Get access today at thecourier.com.au

The Courier
trusted voice