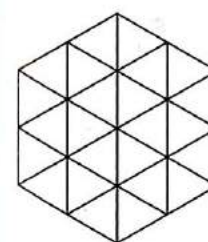


Australian
Institute of
Architects

Victorian
Architecture
Awards

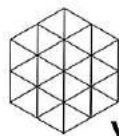


VICTORIAN ARCHITECTURE MEDAL

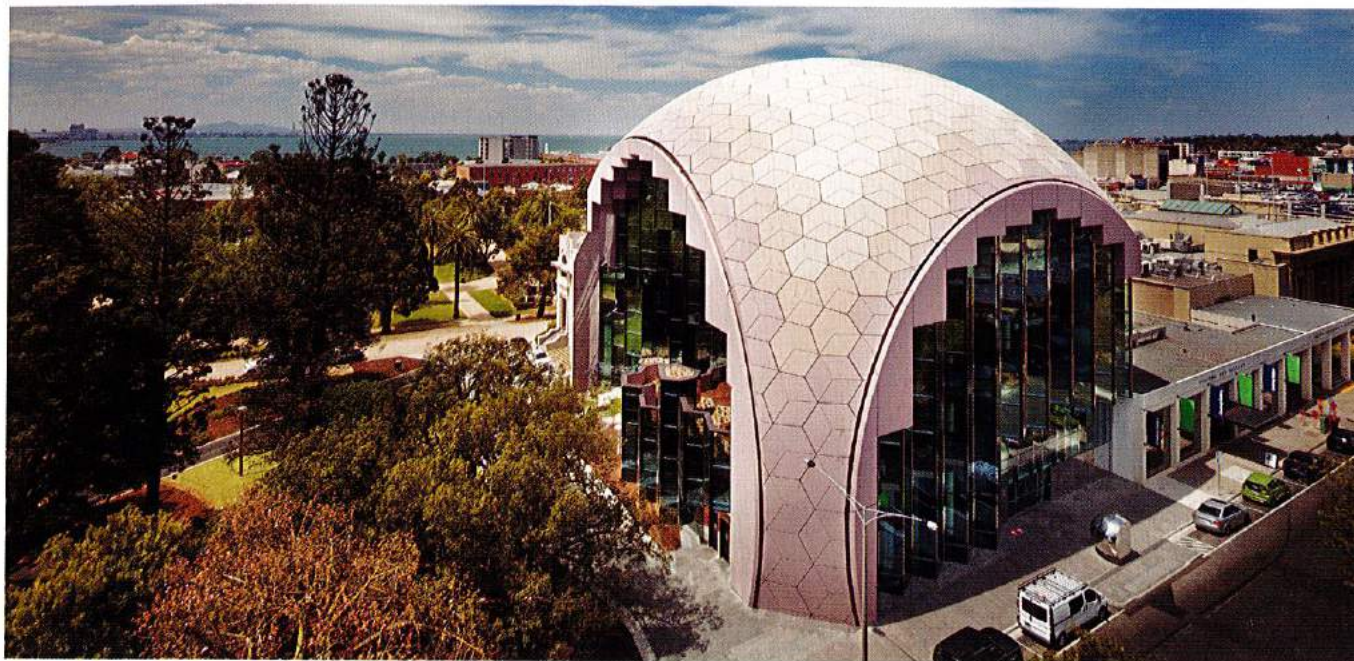
The Victorian Architecture Medal is the highest honour awarded by the Victorian Chapter each year.

The Medal derives from the original 'Street Architecture Medal' introduced by The Royal Victorian Institute of Architects (RVIA) in 1926 as an award for the design of a building of exceptional merit. Buildings were judged on their urban propriety and architectural etiquette; the building had to front a street, road, square or court to which the public had access. It was expected to have a civic character, offering its architectural qualities to the greater public realm of the city.

Today's Victorian Architecture Medal is selected by the Jury Chairs from the field of Named Award winners in each category. The winner of the Victorian Architecture Medal is therefore judged to be the most outstanding project of the entire field of entries, a building of exceptional merit.



VICTORIAN ARCHITECTURE MEDAL



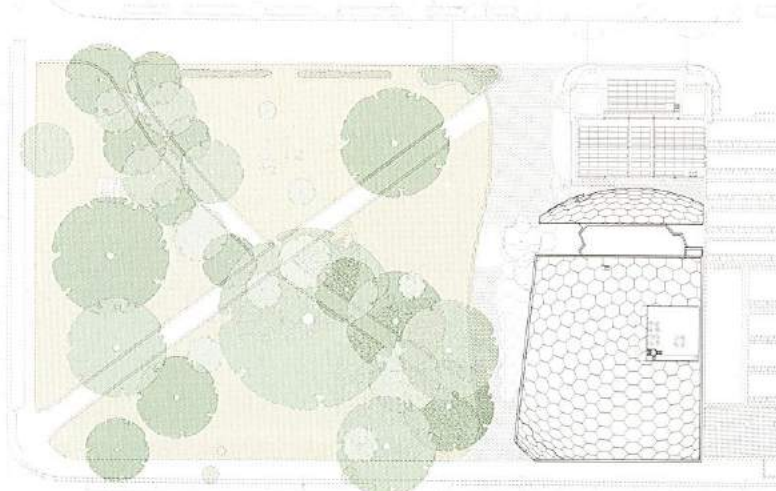
VICTORIAN ARCHITECTURE MEDAL | Geelong Library & Heritage Centre | ARM Architecture

The Geelong Library & Heritage Centre is an exemplar public project and a significant new landmark for the City of Geelong. A striking piece of architecture and major community hub, it has elevated the role of public architecture for both Geelong and the wider regional community.

The distinctive spherical form will undoubtedly become a local postcard image while the spectrum of vivid colours throughout the interior will be a talking point for the local community. The vertical stacking of the building's various functions and spaces offer a model for public architecture which is able to operate in the ongoing densification of our cities.

Located within the 19th century heart of Geelong's civic precinct, the Library has proven to be a continuing catalyst for urban rejuvenation as evidenced by the adjoining public park becoming a new place for the community to meet.

The project represents how architects, clients and stakeholders can work as a collaborative team to ensure that the diversity of contemporary Australian society has a place to learn, socialise, engage or just simply hang-out.



Site Plan

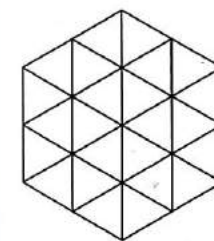
Practice Team: Ian McDougall (Project Director), Andrew Lilleyman (Design Director), Peter Bickle, Wayne Sanderson (Project Architects), Andrea Wilson (Interior Architect), Jonathan Cowle (Design Architect), Will Pritchard, Justin Fagnani, Matthew Pieterse, Michael McManus, Tony Antoniou (Architects), David Hislop (Graduate of Architecture), Natalie Iannello (Interior Designer), Laura Osborne (Graduate of Architecture)

Consultant/Construction Team: Irwinconsult (Structural Consultant), Umow Lai (Services & ESD Consultant), Slattery (Cost Consultant), McKenzie Group (Building Surveyor), Vipac (Acoustic Consultant), Vivid (Wayfinding), Electrolight (Lighting Consultant), TCL (Landscape Consultant), Chris Maragos (Traffic Consultant)

Builder: Kane Constructions

Photographer: John Gollings





INTERIOR ARCHITECTURE

The Interior Architecture category recognises achievement in the design of an interior spatial environment and may include projects completed within a new building or the interior refurbishment of an existing building.



Philip Harmer
Jury Chair



Kelley Mackay
Juror



Jonathan Gardiner
Juror

Category Sponsor

KFIVE + Kinnarps

KFive + Kinnarps believe in making life better at work. To do this we do more than just sell furniture. With products and services to match your needs, we deliver inspiring and effective workspace solutions to help your organisation prosper.



INTERIOR ARCHITECTURE



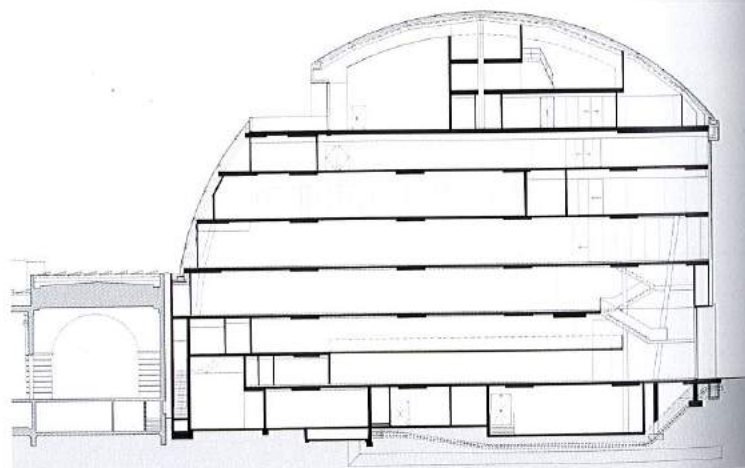
MARION MAHONY AWARD | Geelong Library & Heritage Centre | ARM Architecture

Geelong Library & Heritage Centre rose effortlessly to the top of this year's offering of 32 entries. Like slicing open an exotic tropical fruit to reveal an intricate internal structure, the building is a smooth spherical form divided horizontally into six floor levels.

This internal structure is expressed by two crystalline faceted glass facades, one facing the street and one facing the adjacent park. These facades connect the interior and exterior linking the different floor levels both visually and spatially while creating internal pockets and external balconies.

The interiors are well received by all kinds of people in the heart of Geelong. A strong celebration of place is expressed in the blue and white colour theme on the lower floors of the library while a sumptuous red top floor for functions recalls the luxuriance of the John Truscott interiors of the Arts Centre upon which the architects have previously worked.

ARM Architecture have worked to a high level of skill and inventiveness with colour, details, graphics and materials to create interiors that celebrate cultural activities to a level of excellence, rarely seen in local government endeavours.



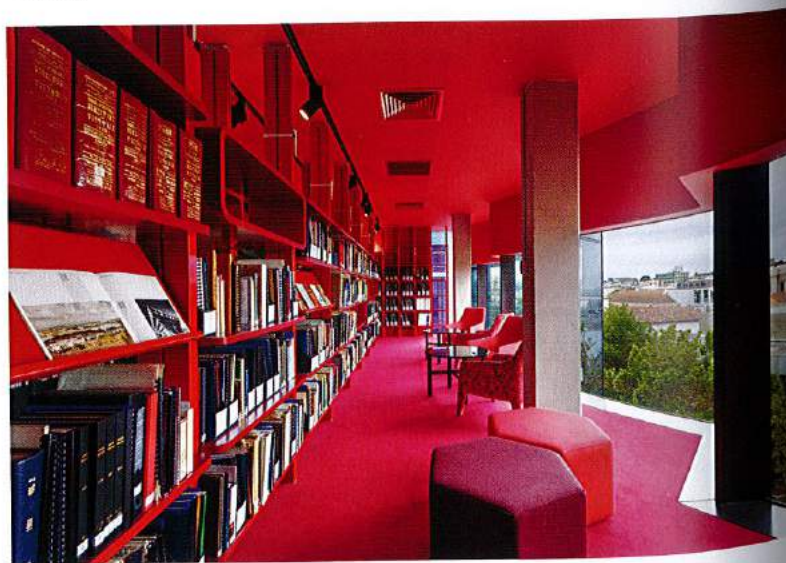
Section

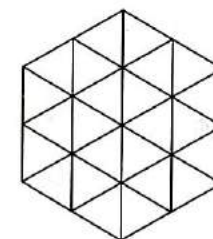
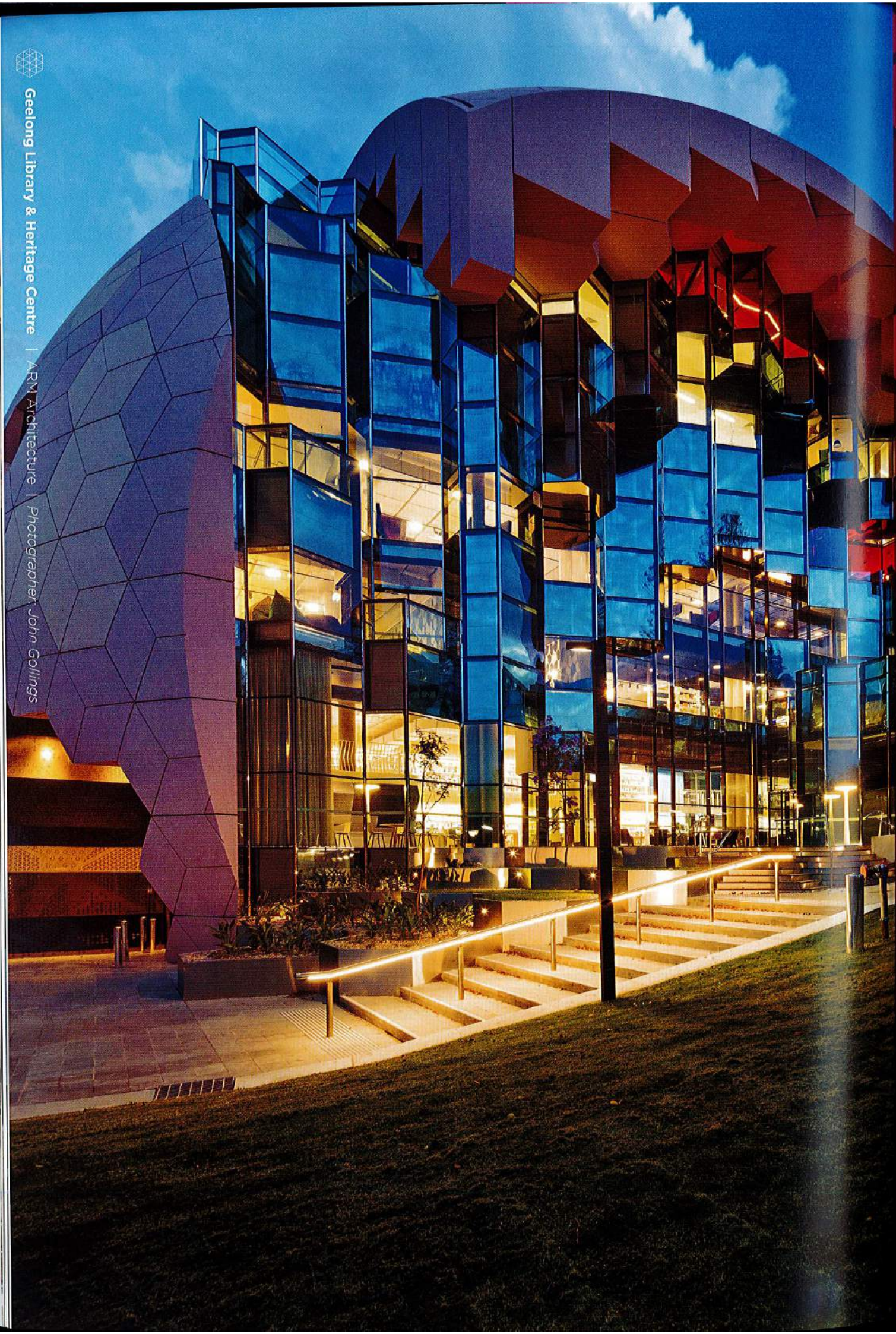
Practice Team: Ian McDougall (Project Director), Andrew Lilleyman (Design Director), Peter Bickle, Wayne Sanderson (Project Architects), Andrea Wilson (Interior Architect), Amber Stewart (Architect), Natalie Iannello (Interior Designer)

Consultant/Construction Team: Umow Lai (Services Consultant), Slattery (Cost Consultant), Vivid (Wayfinding), Electrolight (Lighting Consultant)

Bullder: Kane Constructions

Photographer: John Gollings (top), Emma Cross (right)





PUBLIC ARCHITECTURE

The Public Architecture category recognises achievement in the design of projects which are predominantly public or institutional in nature. Generally, projects considered in this category fall within BCA Class 9.

In Victoria, due to consistently large numbers of entries in this category, projects are grouped into New projects and Alterations & Additions projects for judging purposes.



**Hamish
Lyon**
Jury Chair



**Tim
Leslie**
Juror



**Emma
Jackson**
Juror

Category Sponsor



Dorma has for more than 100 years been passionately following our mission to provide premium access solutions and services enabling better buildings. We are therefore proud to sponsor the 2016 Victorian Architecture Awards Public Architecture category.



PUBLIC ARCHITECTURE



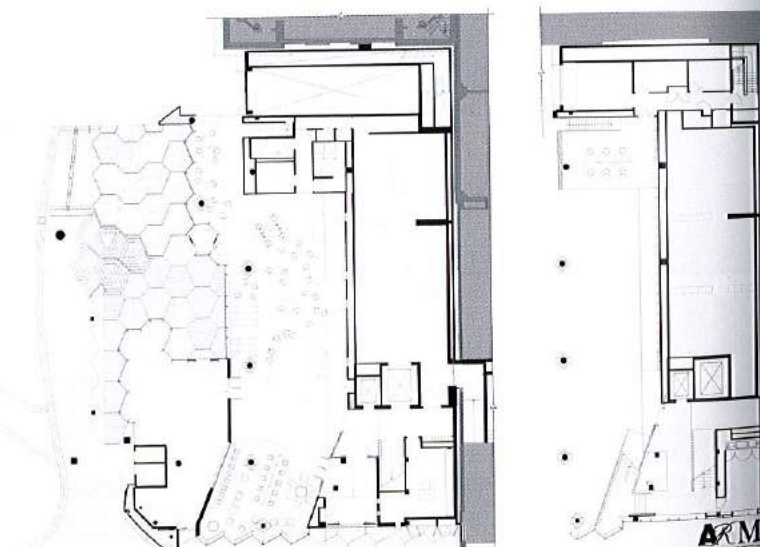
WILLIAM WARDELL AWARD | Geelong Library & Heritage Centre | ARM Architecture

The Geelong Library & Heritage Centre is a significant new landmark for the City of Geelong that has already established itself as a major community attraction.

The building appears embedded in the ground as if dropped from a great height. Conceptually however its distinctive spherical form is a continuation of the historical lineage of library domes such as the State Library of Victoria. Its unique form also operates at a contextual level complementing the cluster of adjoining heritage buildings and the 19th century Geelong Town Hall.

The glazed front elevation to Little Malop Street reveals the vertical stacking of the library's interior spaces, while the more eroded frontage to Johnstone Park offers an inhabited series of balconies and picture windows.

The library's interior reveals a vertical carnival of spaces connected via a generous public stair. Each floor offers a discrete piece of the overall puzzle; from dedicated function spaces and quiet areas to the more active and engaging environment for kids and teenagers. The interior throughout is an intense spectrum of rainbow colours while the ground floor offers a colour combination close to the hearts of the locals - blue and white.



Ground Floor Plan & Mezzanine

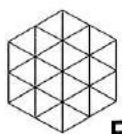
Practice Team: Ian McDougall (Project Director), Andrew Lilleyman (Design Director), Peter Bickle, Wayne Sanderson (Project Architects), Andrea Wilson (Interior Architect), Jonathan Cowle (Design Architect), Will Pritchard, Justin Fagnani, Matthew Pieterse, Michael McManus, Tony Antoniou (Architects), David Hislop (Graduate of Architecture), Natalie Iannello (Interior Designer), Laura Osborne (Graduate of Architecture)

Consultant/Construction Team: Irwinconsult (Structural Consultant), Umow Lai (Services & ESD Consultant), Slattery (Cost Consultant), McKenzie Group (Building Surveyor), Vipac (Acoustic Consultant), Vivid (Wayfinding), Electrolight (Lighting Consultant), TCL (Landscape Consultant), Chris Maragos (Traffic Consultant)

Builder: Kane Constructions

Photographer: John Gollings





REGIONAL PRIZE

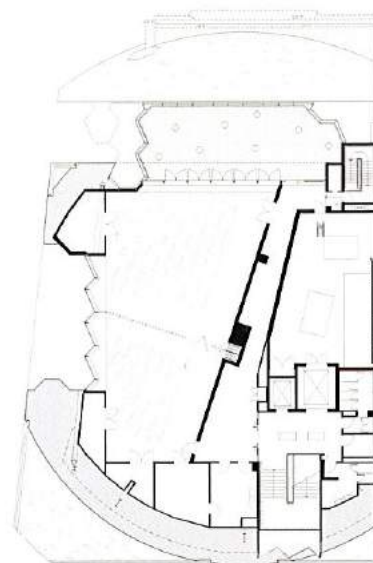


REGIONAL PRIZE | Geelong Library & Heritage Centre | ARM Architecture

The Geelong Library & Heritage Centre has made a significant and unique contribution to the Geelong community. This instantly recognisable building has been the catalyst for a rejuvenated civic precinct much to the benefit of the public.

The project reminds us that libraries can be powerful indicators of community values and aspirations. ARM Architecture have designed a vibrant and energised vertical village where the community can meet, collaborate, engage, learn and celebrate. The colourful interiors are visually and functionally exemplar, delivering long lasting public and cultural benefit.

It is evident that the human experience has been central to the design thinking - from the simple delight of reading a book in the sunlight behind the crystalline facade, to children climbing playfully over purpose designed furniture in the Reading Nest and celebratory events under the dome itself. The architects have demonstrated rigour and commitment to their idea of the library as a 'tuned instrument ready for many points of occupation'.



Level 5 Floor Plan

Practice Team: Ian McDougall (Project Director), Andrew Lilleyman (Design Director), Peter Bickle, Wayne Sanderson (Project Architects), Andrea Wilson (Interior Architect), Jonathan Cowle (Design Architect), Will Pritchard, Justin Fagnani, Matthew Pieterse, Michael McManus, Tony Antoniou (Architects), David Hislop (Graduate of Architecture), Natalie Iannello (Interior Designer), Laura Osborne (Graduate of Architecture)

Consultant/Construction Team: Irwinconsult (Structural Consultant), Umow Lai (Services & ESD Consultant), Slattery (Cost Consultant), McKenzie Group (Building Surveyor), Vipac (Acoustic Consultant), Vivid (Wayfinding), Electrolight (Lighting Consultant), TCL (Landscape Consultant), Chris Maragos (Traffic Consultant)

Builder: Kane Constructions

Photographer: John Gollings







COMMERCIAL LINE
AUSTRALIA LTD
INSURANCE COMPANY
SANDS & MCDONALD'S
DIRECTORY
OF
VICTORIA
1965
ASSOCIATED NATIONAL
INSURANCE COMPANY
LIMITED
FIRE-LIFE-ACCIDENT MAR-INS
489-412 CUBIC ST. MELB. 1
TEL. 62 3333
"SPEED IT THRU"
CUSTOMERS
TRANSACT
CASES
E.S.S.
OFF. 489-412 CUBIC ST. MELB. 1
MELBOURNE V. 623333

COMMERCIAL LINE
AUSTRALIA LTD
INSURANCE COMPANY
SANDS & MCDONALD'S
DIRECTORY
OF
VICTORIA
1967
ASSOCIATED NATIONAL
INSURANCE COMPANY
LIMITED
FIRE-LIFE-ACCIDENT MAR-INS
489-412 CUBIC ST. MELB. 1
TEL. 62 3333
"SPEED IT THRU"
CUSTOMERS
TRANSACT
CASES
E.S.S.
OFF. 489-412 CUBIC ST. MELB. 1
MELBOURNE V. 623333

COMMERCIAL LINE
AUSTRALIA LTD
INSURANCE COMPANY
SANDS & MCDONALD'S
DIRECTORY
OF
VICTORIA
1968
ASSOCIATED NATIONAL
INSURANCE COMPANY
LIMITED
FIRE-LIFE-ACCIDENT MAR-INS
489-412 CUBIC ST. MELB. 1
TEL. 62 3333
"SPEED IT THRU"
CUSTOMERS
TRANSACT
CASES
E.S.S.
OFF. 489-412 CUBIC ST. MELB. 1
MELBOURNE V. 623333

COMMERCIAL LINE
AUSTRALIA LTD
INSURANCE COMPANY
SANDS & MCDONALD'S
DIRECTORY
OF
VICTORIA
1969
ASSOCIATED NATIONAL
INSURANCE COMPANY
LIMITED
FIRE-LIFE-ACCIDENT MAR-INS
489-412 CUBIC ST. MELB. 1
TEL. 62 3333
"SPEED IT THRU"
CUSTOMERS
TRANSACT
CASES
E.S.S.
OFF. 489-412 CUBIC ST. MELB. 1
MELBOURNE V. 623333